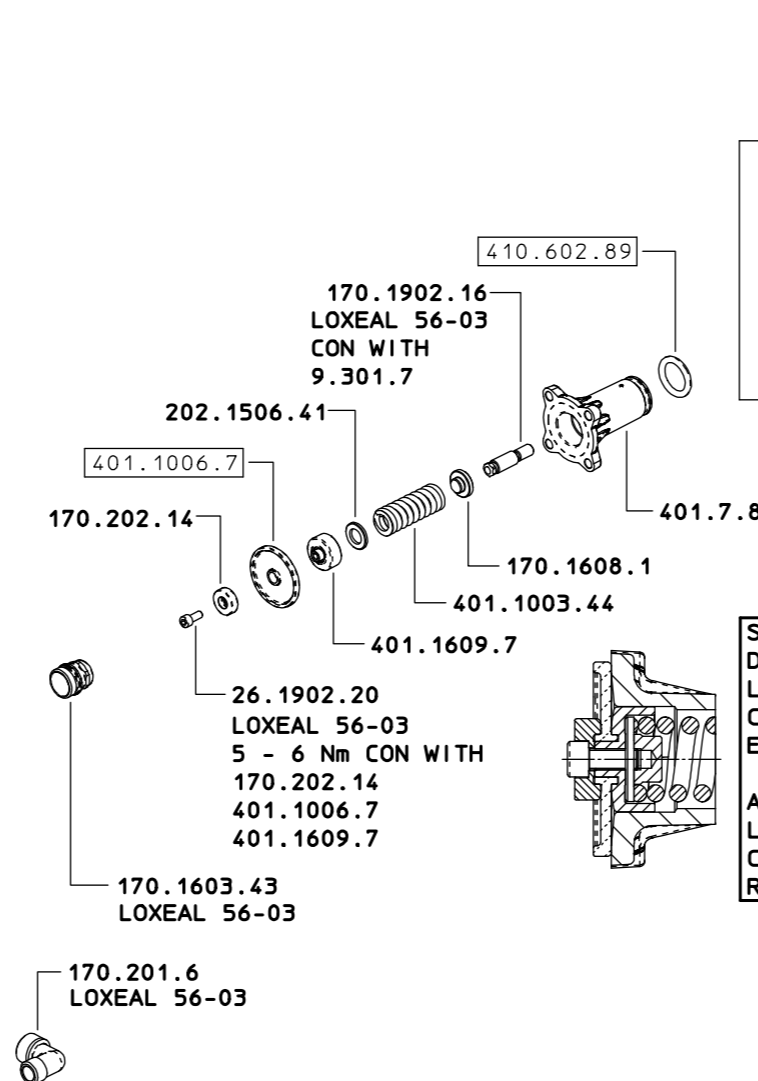
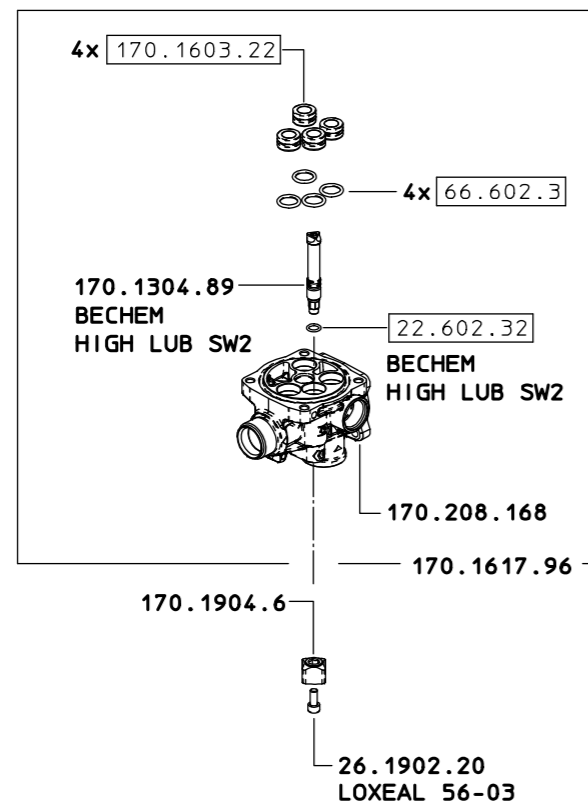
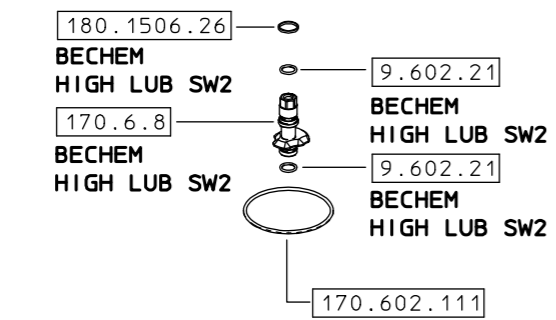
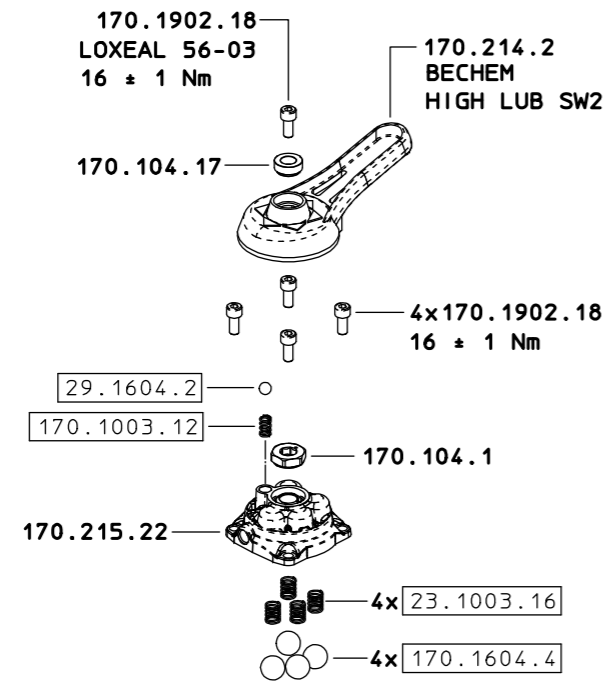
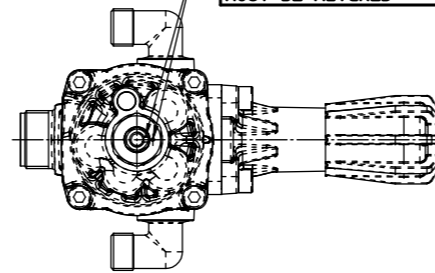


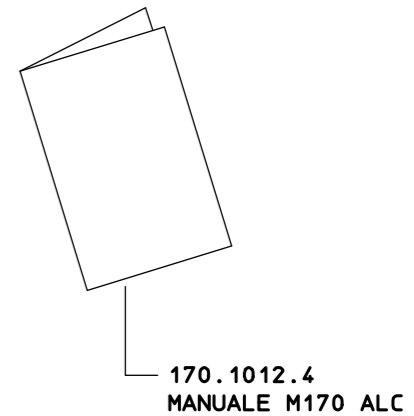
SCALA SCALE 1/2

I DUE RIFERIMENTI SU  
170.104.1 E 170.6.8  
DEVONO ESSERE ALLINEATI  
THE TWO REFERENCES ON  
170.104.1 AND 170.6.8  
MUST BE ALIGNED



SCALA SCALE 1:1  
DIREZIONE ASSEMBLAGGIO 401.1006.7  
LUBRIFICARE CON GRASSO MOLY LT2 I  
COMPONENTI SOGGETTI A SFREGAMENTO  
E ROTAZIONE

ASSEMBLY DIRECTION FOR 401.1006.7  
LUBRICATE WITH MOLY LT2 GREASE THE  
COMPONENTS SUBJECTED TO RUBBING AND  
ROTATION



SOLO PER LOTTI DI PRODUZIONE < OTTOBRE 2023  
ONLY FOR PRODUCTION BATCHES < OCTOBER 2023  
COME SI ORDINA / HOW TO ORDER  
Kit ricambio  
Spare parts kit **170.302.30**

COME SI ORDINA / HOW TO ORDER  
Kit ricambio  
Spare parts kit **170.302.83**